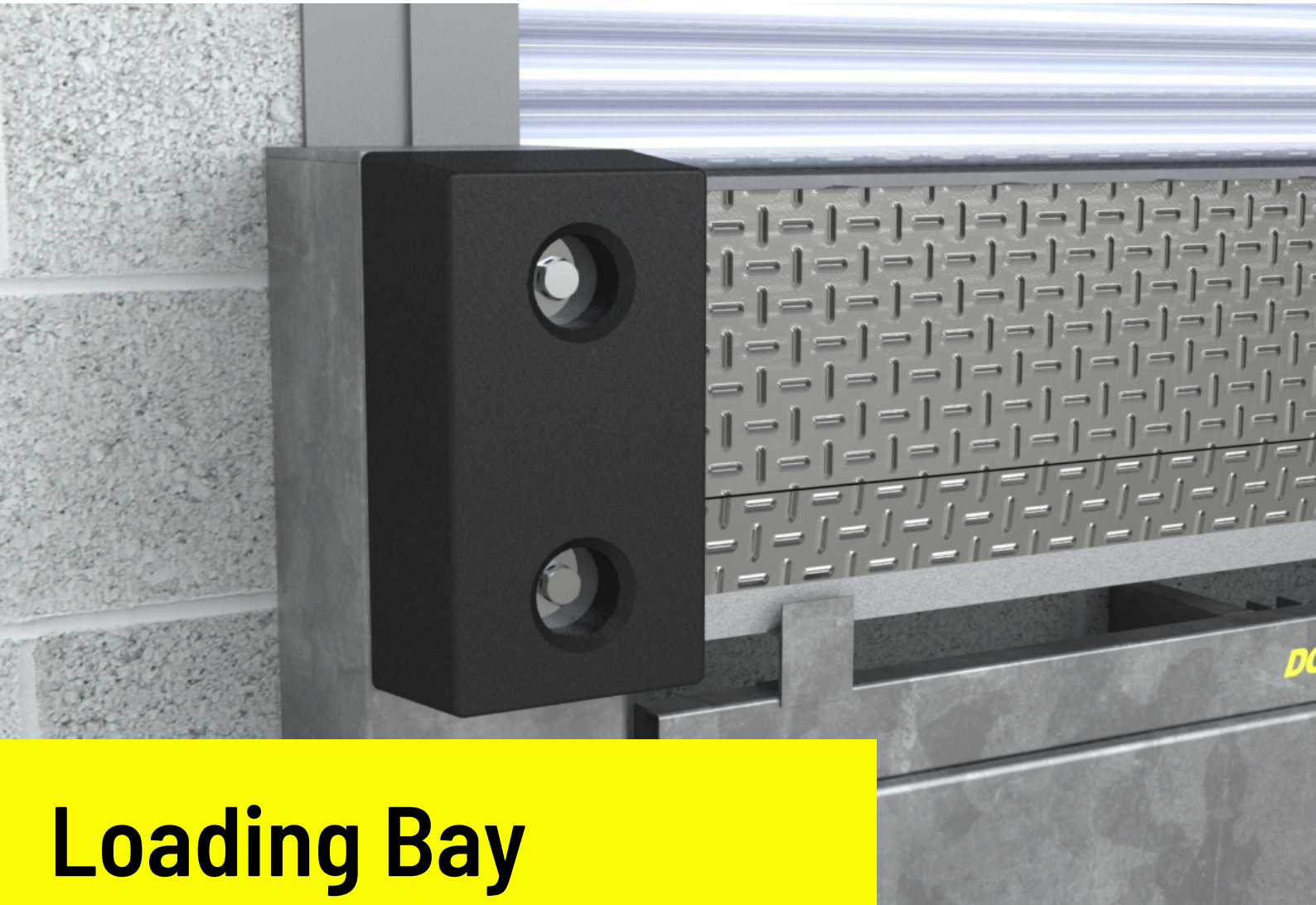


DOCK SOLUTIONS LTD

**UK MANUFACTURED LOADING BAY EQUIPMENT
AND INDUSTRIAL DOORS**



Loading Bay Accessories

  /docksolutions

 /company/docksolutions

01594 825200 | info@docksolutions.co.uk | docksolutions.co.uk

Unit 1 Seymour Business Park, Whimsey Industrial Estate, Cinderford,
Gloucestershire, GL14 3JA

 **Alcumus**
Safer, Healthier, Stronger

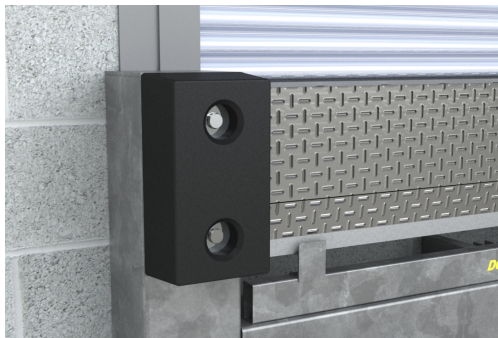
 **smas**
WORKSAFE ✓

 **Ale**
LIFTING STANDARDS

 **HAS**
Accredited Contractor
www.has.co.uk



Rubber Dock Bumpers



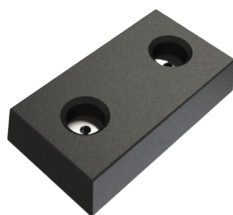
Popular standard rubber dock bumpers designed to protect a loading dock from reversing HGV's. They can be attached using a back plate and further life span available if front plates are installed.



Made of ultra-high-molecular-weight-polyethylene, The UHMWPE Bumpers are the ideal dock bumper for durability. The bumper's housing block provides incredible stiffness and makes maintenance easier and faster by allowing for the simple replacement of the front plates.



Compatible with the 750mm and 450mm rubber and UHMWPE Dock Bumpers the Spring Loaded Dock Bumper enables the bumper to slide down while the trailer is loaded, returning to its original position when the trailer rolls away, thanks to a large spring assembly beneath the bumper.



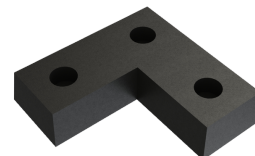
DB450-100RB
450 Rubber Dock Bumper
Material: Natural SBR Rubber
Unit: Piece (1)
Dimensions: 450(H)x250(W)x100



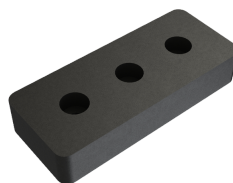
DB450-150RB
450 Rubber Dock Bumper
Material: Natural SBR Rubber
Unit: Piece (1)
Dimensions: 450(H)x250(W)x150(D)



DB750-100RB
450 Rubber Dock Bumper
Material: Natural SBR Rubber
Unit: Piece (1)
Dimensions: 750(H)x250(W)x100(D)



DB440-100LSRB
450 Rubber Dock Bumper
Material: Natural SBR Rubber
Unit: Piece (1)
Dimensions: 450(H)x450(W)x100(D)



DB600-108RB
660 Rubber Dock Bumper
Material: Natural SBR Rubber
Unit: Piece (1)
Dimensions: 660(H)x250(W)x100(D)



DB330-100RB
330 Rubber Dock Bumper
Material: Natural SBR Rubber
Unit: Piece (1)
Dimensions: 330(H)x250(W)x100(D)



DB450-115UHM
450 UHMWPE Dock Bumper
Material: UHMWPE/Natural SBR Rubber
Unit: Piece (1)
Dimensions: 450(H)x250(W)x115(D)



DB750-115UHM
750 UHMWPE Dock Bumper
Material: UHMWPE/Natural SBR Rubber
Unit: Piece (1)
Dimensions: 750(H)x250(W)x115(D)



DB450-720SLB + DB450-100RB
450 Spring Loaded Bumper
Material: Steel/Natural SBR Rubber
Unit: Piece (1)
Dimensions: 815(H)x250(W)x150(D)

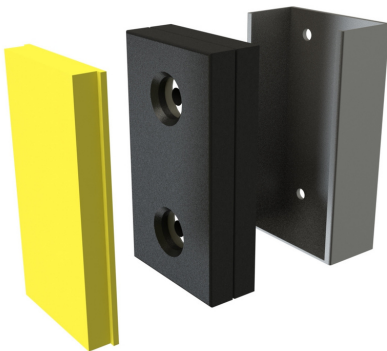


DB750-965SLB + DB750-100RB
750 Spring Loaded Bumper
Material: Steel/Natural SBR Rubber
Unit: Piece (1)
Dimensions: 1110(H)x250(W)x150(D)

Dock Bumpers & Accessories



With added advantage of no holes in the UHMWPE face plate reducing the snagging from trucks. The 50mm thick faceplate can slide freely up and down within its steel cradle back-plate. Replacing the worn nylon face is simple and can be done in seconds saving time and money in maintenance costs.



DB450-160GALVRBUHM

450 UHMWPE Cradle Bumper

Material: Natural SBR Rubber

Unit: Piece (1)

Dimensions: 465(H)x280(W)x160(D)



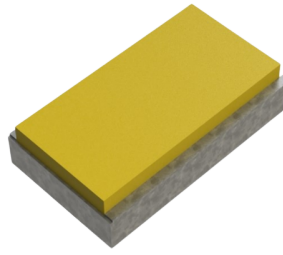
DB750-160GALVRBUHM

750 UHMWPE Cradle Bumper

Material: Natural SBR Rubber

Unit: Piece (1)

Dimensions: 765(H)x280(W)x160(D)



DB465-110GALVRBUHM

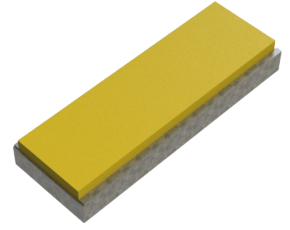
450 UHMWPE Cradle Bumper

Material: UHMWPE/Galvanised

Steel/Rubber

Unit: Piece (1)

Dimensions: 470(H)x260(W)x110(D)



DB760-115GALVRBUHM

450 UHMWPE Cradle Bumper

Material: UHMWPE/Galvanised

Steel/Rubber

Unit: Piece (1)

Dimensions: 770(H)x260(W)x110(D)



DB470-80-GALVC

450 Dock Bumper Cradle

Material: Galvanised Steel

Unit: Piece (1)

Dimensions: 470(H)x260(W)x80(D)



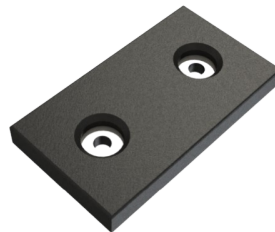
DB770-80-GALVC

750 Dock Bumper Cradle

Material: Galvanised Steel

Unit: Piece (1)

Dimensions: 770(H)x260(W)x80(D)



DB450-50RB

450 Dock Bumper Packer

Material: Natural SBR Rubber

Unit: Piece (1)

Dimensions: 450(H)x250(W)x50(D)



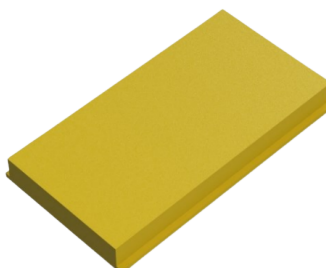
DB750-50RB

450 Dock Bumper Packer

Material: Natural SBR Rubber

Unit: Piece (1)

Dimensions: 750(H)x250(W)x50(D)



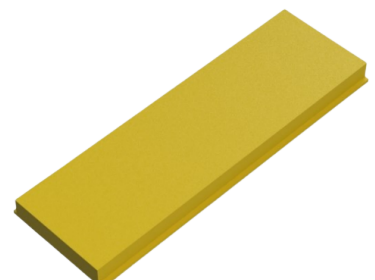
DB450-50UHMFP

450 UHMWPE Face Plate

Material: UHMWPE

Unit: Piece (1)

Dimensions: 450(H)x250(W)x50(D)



UHM750-50FP

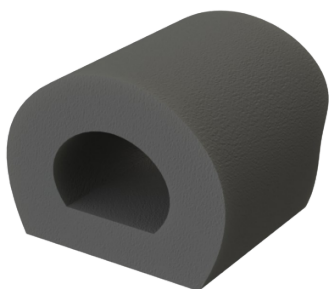
750 UHMWPE Face Plate

Material: UHMWPE

Unit: Piece (1)

Dimensions: 750(H)x250(W)x50(D)

Dock Bumpers & Accessories



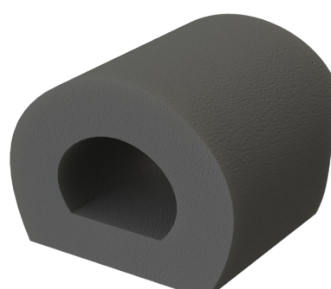
DB92-95-2EXTRB

92x95 Extrusion

Material: Natural SBR Rubber

Unit: Piece (1)

Dimensions: 92(H)x95(W)x2000(L)



DB92-95-1EXTRB

92x95 Extrusion

Material: Natural SBR Rubber

Unit: Piece (1)

Dimensions: 92(H)x95(W)x1000(L)



BP460-15ST

450 Back Plate

Material: Steel

Unit: Piece (1)

Dimensions: 450(H)x250(W)x15(D)



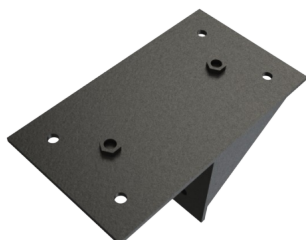
BP750-15ST

750 Back Plate

Material: Steel

Unit: Piece (1)

Dimensions: 750(H)x250(W)x15(D)



BP460-15ST-150AD / BP460-15ST-250AD

450 Back Plate 150mm or 250mm Above Dock

Material: Steel

Unit: Piece (1)

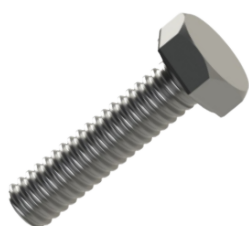


BP750-15ST-150AD / BP750-15ST-250AD

750 Back Plate 150mm or 250mm Above Dock

Material: Steel

Unit: Piece (1)



FIXINGS1

M20 x 50/55mm BOLTS - Dock Bumper Fixings



FIXINGSWG

M16 x 90mm THRU BOLT - Wheel Guide Fixings/Back Plate to Concrete

Wheel Guide



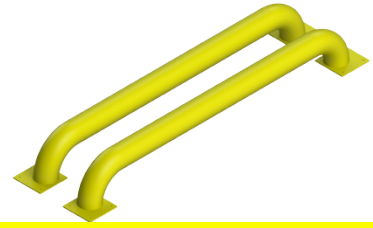
Straight bolt-down wheel guides can be supplied in a standard yellow painted finish or galvanised steel with a yellow powder coat finish. Their 5mm wall thickness makes them a very durable driver aid ensuring that trailers contact the loading dock squarely. The steel can be galvanised for durability and rust protection. See below-related products for fixing kits and variations.



Dock Solutions low-profile wheel guides are ideal for unloading double-decker trailers or trailers with smaller than average wheel diameters. This pair of bolt-down wheel guides can be supplied in galvanised metal with a powder-coat finish, or yellow painted finish.



This pair of Dock Solutions flared bolt-down Lorry wheel guides can be supplied in galvanised and powder-coated finish or in a standard yellow painted finish. Their splayed ends increase the effectiveness of this essential driver aid ensuring that trailers contact the loading dock squarely when reversing onto a loading bay.



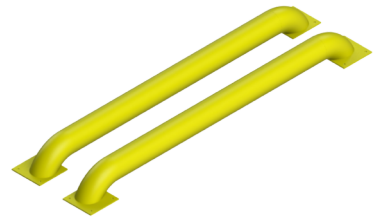
WG168PBD

Straight Wheel Guide

Material & Finish: Made from 168mm steel tube & available in Painted, Galvanised and Powder Coated finish

Unit: Pair (2)

Dimensions: 2400/2070(L)x250(W)x365(H)



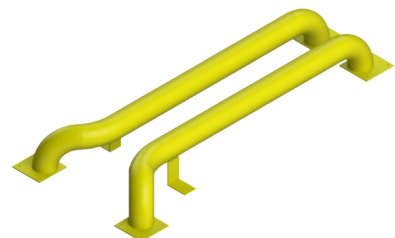
WG168LLP

Low Profile Wheel Guide

Material & Finish: Made from 168mm steel tube & available in Painted, Galvanised and Powder Coated finish

Unit: Pair (2)

Dimensions: 2400/2070(L)x250(W)x200(H)



WG168FLARED

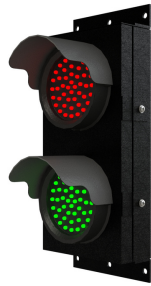
Flared Wheel Guide

Material & Finish: Made from 168mm steel tube & available in Painted, Galvanised and Powder Coated finish

Unit: Pair (2)

Dimensions: 2400/2070(L)x488(W)x325(H)

Safety Lights



TL1

Traffic Light

Unit: Piece (1)

Housing: Aluminium & Stainless Steel

LED Quantity: 45 Red & 45 Green



LOADINGLIGHT

Flexible Arm Loading Bay Light

Unit: Piece (1)

Material: Aluminium, Iron, PC

Wattage: 15W, 25W, 40W, 50W